

An aerial photograph of a mountainous region in Bhutan. The landscape is dominated by terraced rice fields that follow the contours of the hills. The fields are in various stages of cultivation, with some appearing as brown earth and others as vibrant green. A small village with several traditional Bhutanese-style houses is nestled in the valley. The surrounding hills are covered in dense, lush green forest. The overall scene depicts a harmonious blend of agriculture and nature.

The double-edged sword: Bhutan's conservation policy VS food security of rural farmers

Chencho Dukpa
Chief Research Officer, Ministry of Agriculture and
Forests, Bhutan

We are here



© 2015 ORION-ME
© 2015 Google
Image Landsat
US Dept of State Geographer

Goog

Imagery Date: 4/10/2013 47°05'46.50" N 13°58'59.67" E elev 680 ft eye al



Bhutan

US Dept of State Geographer
© 2015 Google
Image Landsat
© 2015 AutoNavi

Google earth

Imagery Date: 4/10/2013 25°59'24.75" N 85°16'46.45" E elev 3925 ft eye alt 3809.02 mi



Thimphu

Bhutan
Bhutan

US Dept of State Geographer
© 2015 Google
Image Landsat
© 2015 AutoNavi

Google earth

Imagery Date: 4/10/2013 27°30'55.51" N 90°26'08.05" E elev 12013 ft eye alt 202.51 mi















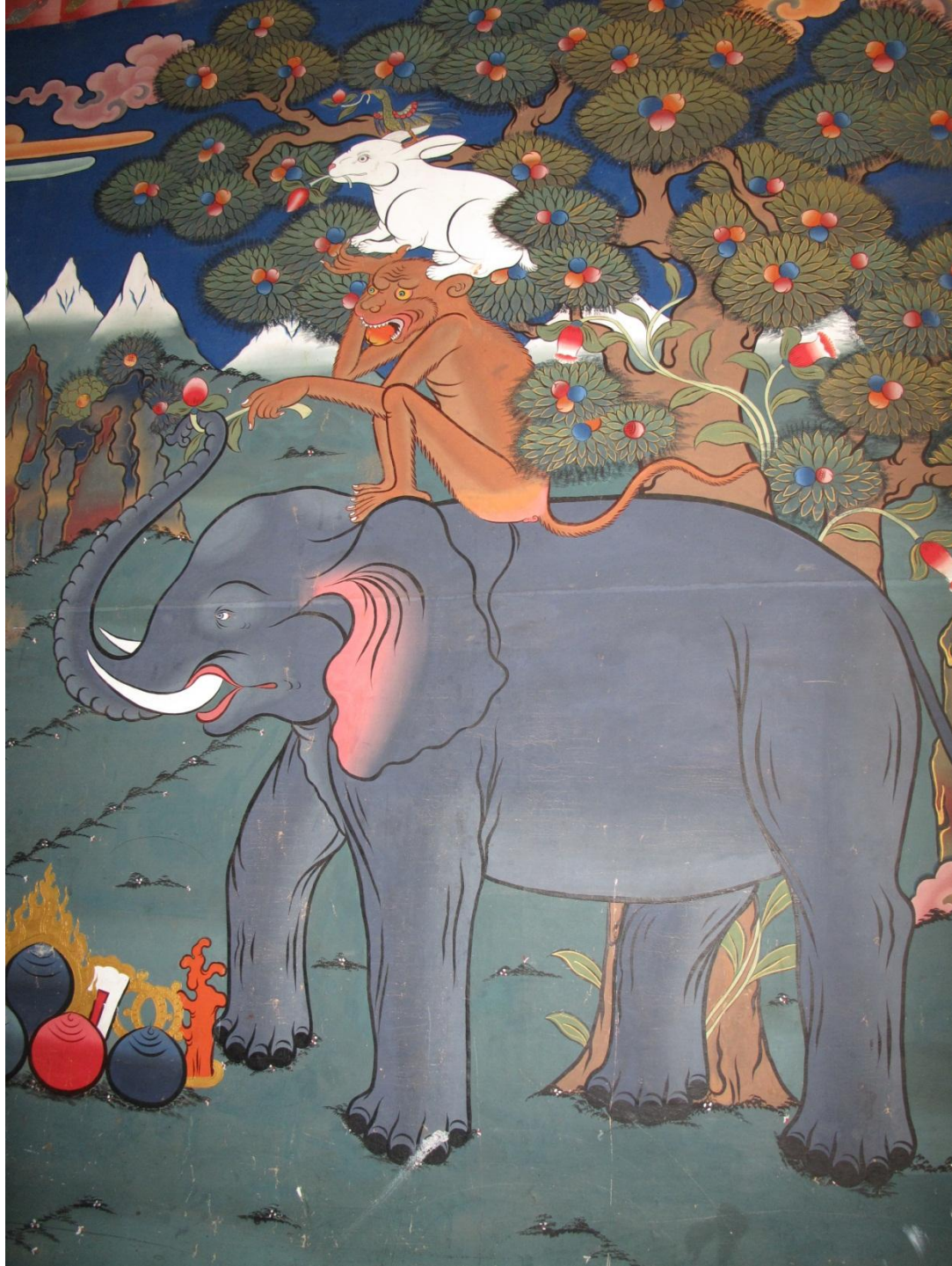
ལྷ་སྐྱུ་རྩོམ་གྲགས།
LHADEN SALE
No. 2020 LAM, MAIN TRAFFIC
Thimphu : Bhutan
Contact No. 333835 Tel. 17421544

ལྷ་སྐྱུ་རྩོམ་གྲགས་པའི་ལྷན་ཁག་གི་འཛིན་སྐྱོང་ལས་ཁུངས་།
GASPE SANGAY MANCHO TSHONGKANG
Dzong in / 1842YANGKANG GONGTOK/PHUNDRAS
SHOP No. 11 LAMZEE THIMPHU
PH. No. 333420 (2075-71)

COUNTER
PHUNDRAS

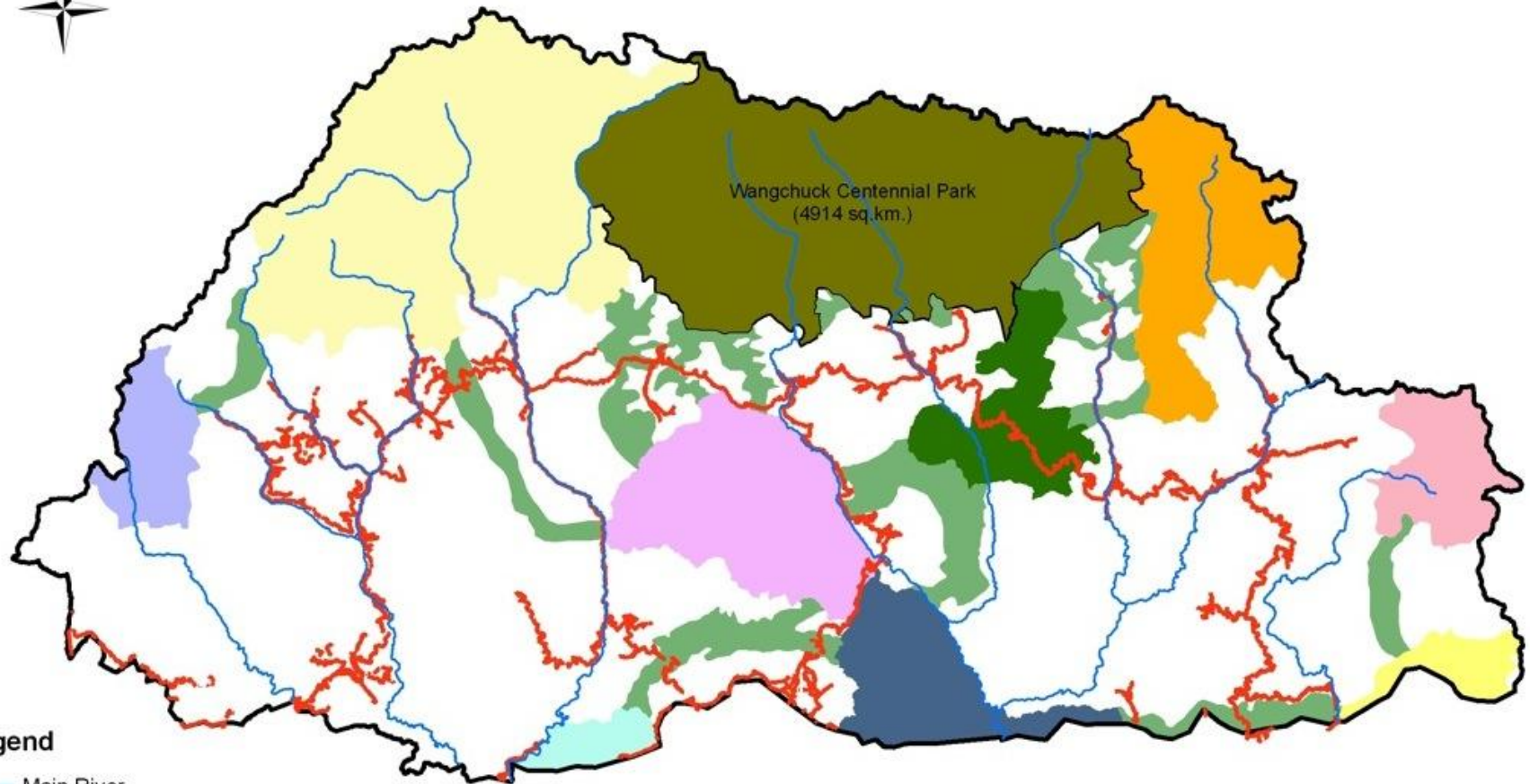
ལྷ་སྐྱུ་རྩོམ་གྲགས་།
BP-1

2060



Is wildlife in Bhutan over-protected?

National Protected Areas and Biological Corridors of Bhutan



Legend

- Main River
- National Highway
- International Boundary

- Bumdeling Wildlife Sanctuary
- Jigme Dorji National Park
- Jigme Singye Wangchuck National Park
- Khaling Wildlife Sanctuary
- Phipsoo Wildlife Sanctuary
- Wangchuck Centennial Park
- Royal Manas National Park
- Sakteng Wildlife Sanctuary
- Thrumshingla National Park
- Torsa Strict Nature Reserve
- Biological Corridor

Prepared at GIS Unit, DoF, MoA
Thimphu

1:1,546,746

0 20 40 80 Kilometers

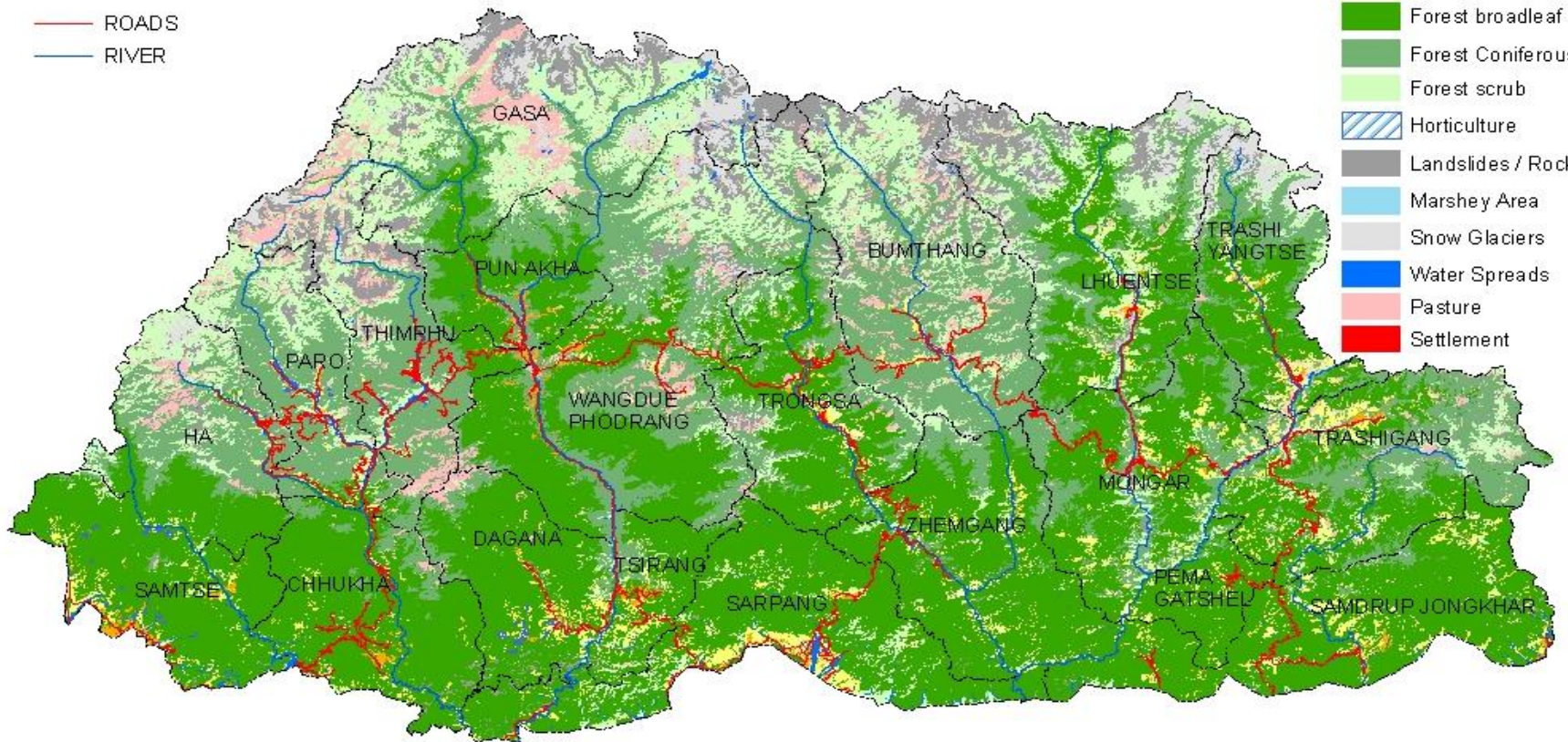
Land Cover Map of Bhutan



Legend

- ROADS
- RIVER

- Dryland Agriculture
- Tseri
- Wetland Agriculture
- Forest broadleaf
- Forest Coniferous
- Forest scrub
- Horticulture
- Landslides / Rocks
- Marshey Area
- Snow Glaciers
- Water Spreads
- Pasture
- Settlement



Source: IMS, PPD, Ministry of Agriculture.

0 9,000 18,000 36,000 54,000 72,000 meters

Land Cover (source: NSSC, 2012)

Land cover type	Area (sq.km)	Area (%)
Forest with tree cover	27,053	70.46
Cultivated agriculture	1,125	2.93
Built up area	62	0.16
Non-built up area	3	0.01
Barren	1,230	3.20
Degraded	206	0.54
Meadows	1,575	4.10
Shrubs	4,005	10.43
Marshy areas	3	0.01
Snow cover	2,854	7.43
Water bodies	277	0.72
Total (country)	38,394	100.00

2013-05-18 12:12:22 PM M 3/3



5°C



HC500 HYPERFIRE



2014-02-13 11:19:47 PM M 2/3

8°C



HC500 HYPERFIRE







2013-04-25 1:38:58 PM M 3/3

● 13°C



HC500 HYPERFIRE





2013-11-27 4:53:57 PM M 3/3

18°C



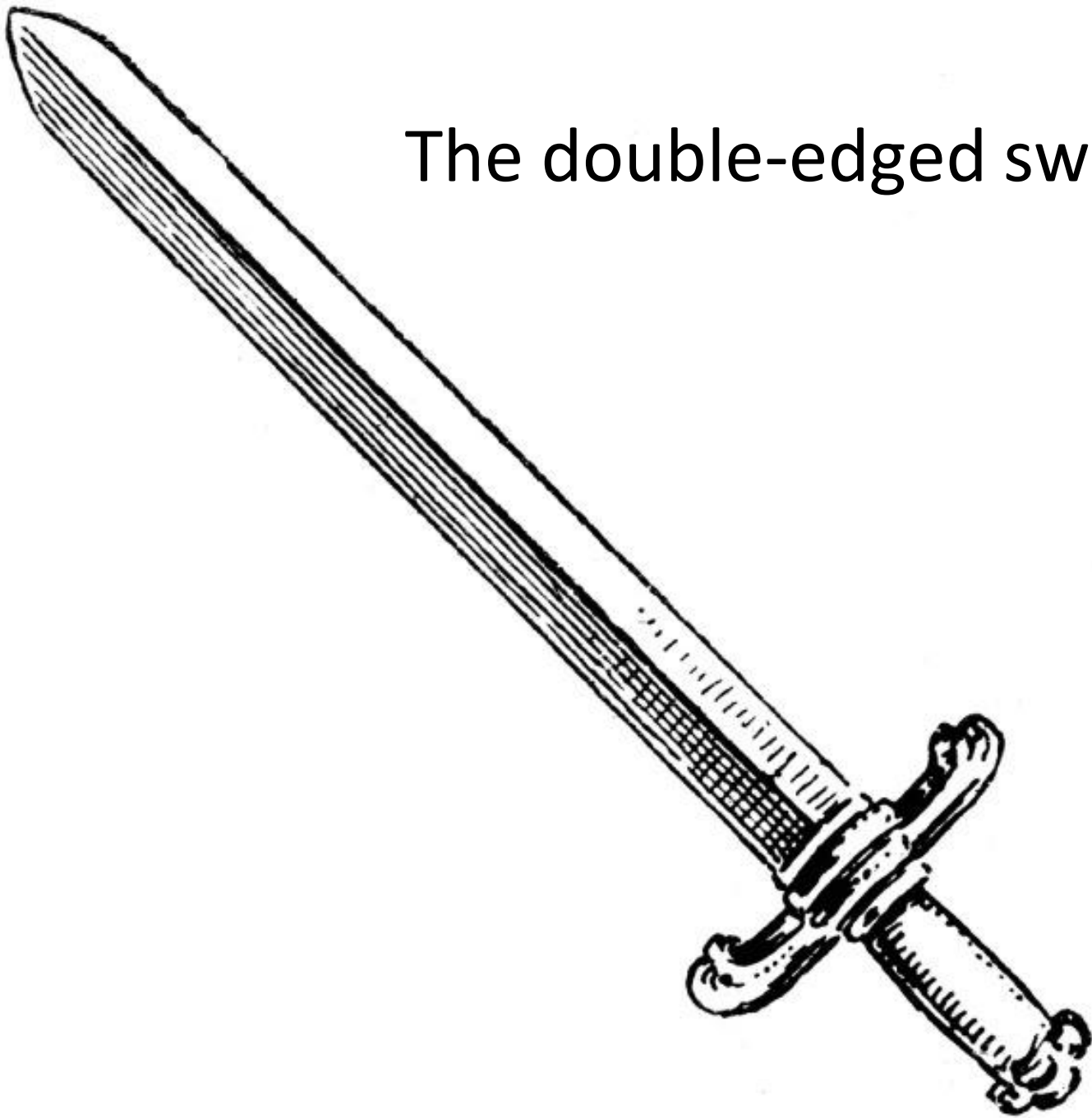
HC500 HYPERFIRE



...but forests are also not only for
wildlife conservation purpose

- Rivers for Hydropower
- Medicinal plants
- Alternative source of food
- Tourism
- Recreation
- etc

The double-edged sword



- Crop/livestock loss
- Crop guarding
- Rural-urban migration
- Feminisation of farms
- High labour cost in rural areas
- Agricultural land left fallow











Can Bhutan strike a balance?



THANK YOU